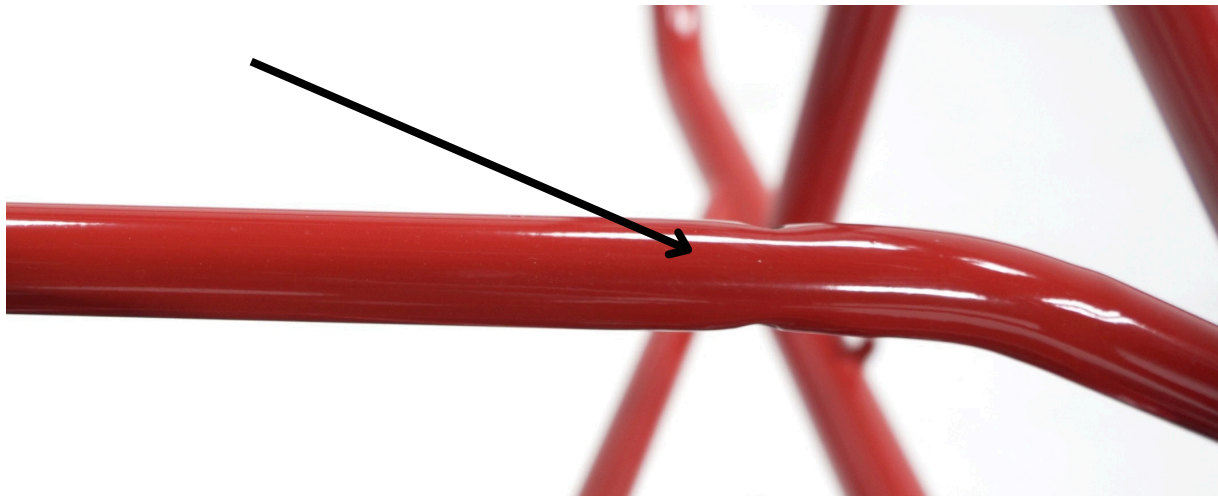


CASM Clamp on Installation

Major Seat Note:

- New Seats are far easier to Install, as they are square!
- Used Seats are typically twisted Left Shoulder forward, so when Installing left side back will require more spacing to seat for system to slide!

Before Installation both Back Seat Mount and Bottom Seat Mount Tubes will need to be Sanded Smooth where the Bungs are Welded in! This will Insure that the CASM Mount will fit Cleanly around the Tubes. If there is any weld remnants left on tubes this will break the mounting brackets



C.A.S.M. PARTS

ONE BOTTOM MOUNT
UNASSEMBLED (1 OF 2)



BOTTOM CONNECTION STRAP



STANDARD REAR SLIDE MOUNT
UNASSEMBLED (1 OF 2)



Sandwich assembly and bottom bracket around seat tube, pistons always face forward and install forward at seat bottom.

Typically this is angled in the seat, most seats are 10 deg.

CASM logo always is on top, tighten both assembly bodies with bolts to the tube. When tightening leave the four outside bolts a little more loose so you can rotate system as needed to desired angle

Typically the center of each bottom assembly is centerline with the seat bolt holes at 9"



We typically use the provided bottom connection strap. We attach strap with 1" flathead bolts (provided). On a Lajoie Seat the bracket bolts to the outside pistons, all other seats the bracket bolts to the inside pistons

Transfer Punch Points



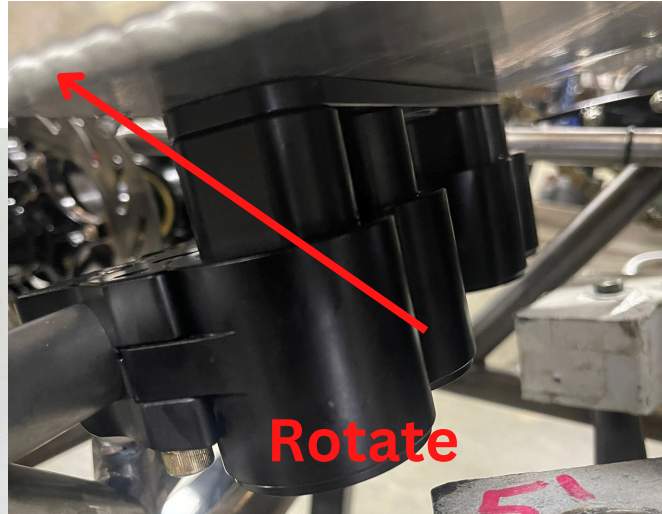
When Assembly is at proper angle , Insert transfer punch in to open piston holes in strap.



Set seat on top of bottom assembly, use a rubber mallet to indent transfer points onto bottom of seat. Always oversize hole when drilling, we have provided 1.750" flathead bolt countersunk aluminum washers to sandwich holes. We recommend 7/16" hole but if your hole is off 1/2" will also work

Rear Slide Mounts

zero clearance rear
slide mount (1 of 2)



Standard rear slide
mount (1 of 2)



Before mounting rear slide mounts rotate bottom assembly to desired angle away from A frame

Foam needs to be installed to raise pistons for rear mount installation !!!!

Install the Rear Sliders onto the rear desired seat bar
Set Face of black gimble transfer flat at 90 deg with back of seat
when desired position is found, install transfer punch, hit and
remove set screw and mount right side.

We highly recommend doing the right rear side first, remember used
seats twist left shoulder forward.

The system needs the angles to be close in order for the Pistons and
Sliders to move freely,

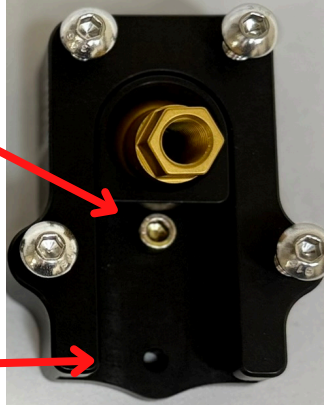


Back of seat ,same angle to start

After the punch hole is drilled out
remove set screw for slide to move

Set Screw

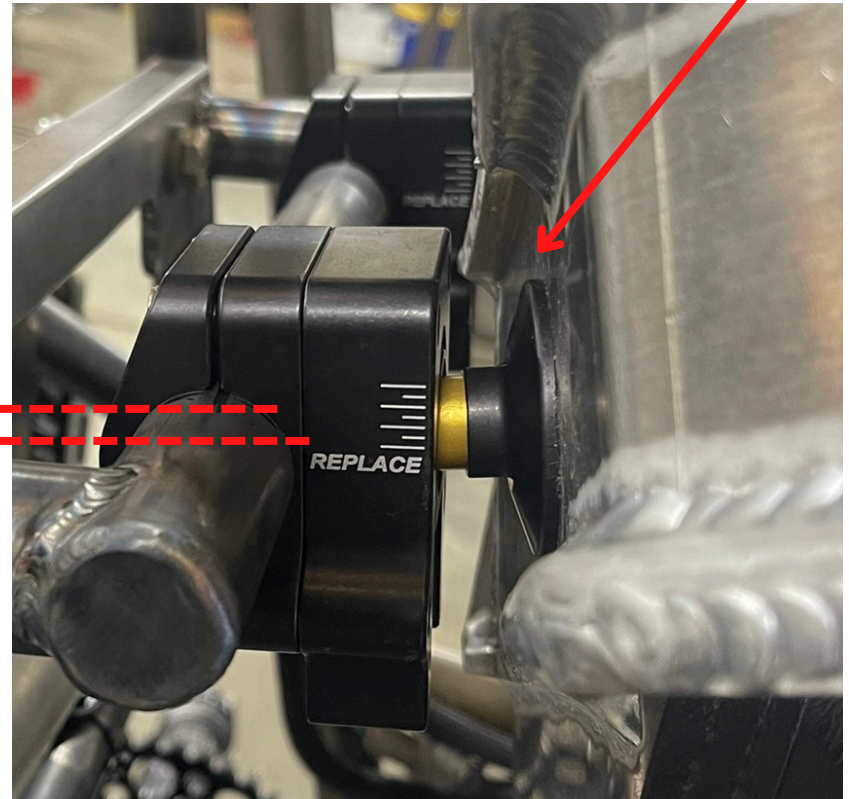
**Move to bottom hole
after drilling hole in
back of seat.**



When you get the right side rear slider
attached, snug seat bolts slightly and leave
mount to chassis bolts slightly loose or free.
try to get the system to move ~~freely up and~~
down with these three points before trying
to attach left side rear mount. most of the
time the angles will be the same. (When
using a Lajoie seat you will not be matching
angles, you will just have to find the sweet
slide spot).

When you have the three attachments sliding freely measure from the left side black
gimble transfer to the back of the seat, if its a new seat most likely the spacing will be
the same. However if it is a used seat we have seen as much as a 1" spacer being
needed on the left rear slide mount to make the system slide free. We do not know
why this occurs but used sprint car seats all twist left shoulder forward. As for
Midgets and Micros we have not found any twisted seats as of yet.

The perfect seat gimble transfer to seat
is a flush mount or one or two impact
washers that are supplied with the
system



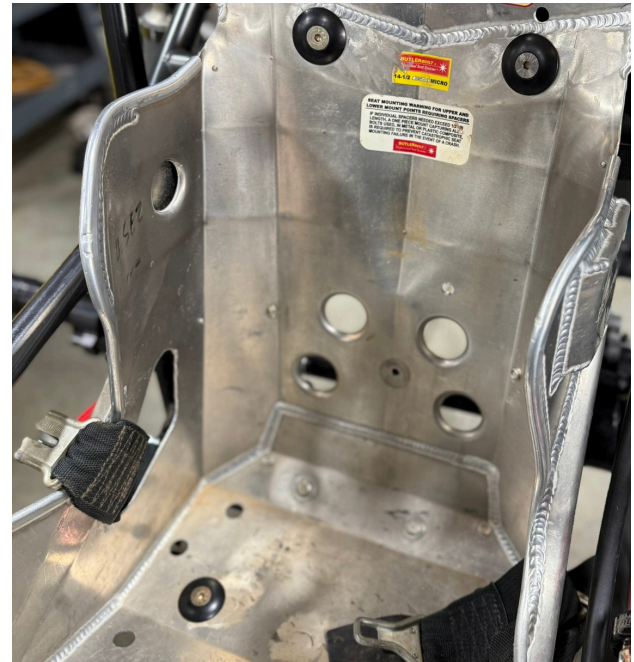
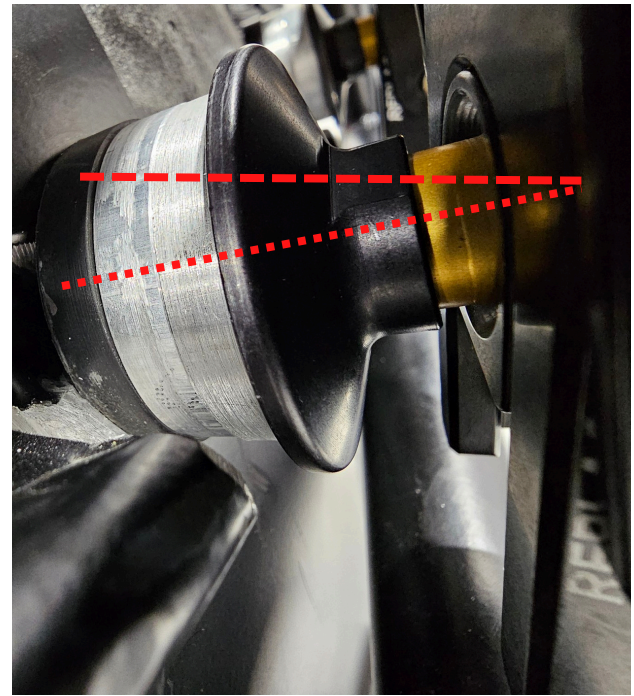


It is ok to use spacers as long as you use the provided rubber impact washer up against the back of the seat.

These photos show examples of how the gimbals can both be at different angles and the system still slide free. We call it finding the happy spot.

Once you get the left side spacing happy and the system slides freely you are now finished with the installation part of the instructions.

Congratulations as you have now done what most say is impossible, If you have multiple cars you will find that the next system installation time will be cut in half.



Tools Needed

- 1/2" Socket (lower foam caps)
- 3/16" Allen Wrench (Back Sliders)
- Angle Finder (Any kind)
- 7/32 Allen Wrench for countersunk seat bolts
- 1/4 Allen Wrench for lower piston clamps
- 11/16" Wrench for slotted gimble transfer
- Loctite for all seat bolts(strength of your choosing)
- Large Square if you do not have a Angle Finder